



Modular Cooking Range Line 700XP One Well Electric Fryer Top 12 liter

ITEM # _____
MODEL # _____
NAME # _____
SIS # _____
AIA # _____



371079 (E7FRED1E00)

12-lt electric Fryer Top with 1 well (internal heating elements), 1 basket and lid included

371142 (E7FRED1E0N)

12-lt electric Fryer Top with 1 well (internal heating elements), 1 basket and lid included

Short Form Specification

Item No. _____

Unit to be Electrolux Professional 700XP One 12 lt well Electric Fryer Top. Unit to have high efficiency tilting incoloy heating elements inside the well. Electric characteristics to be ___ 400 V or ___ 230 V three phase. Unit to be installed on open base installations, bridging supports or cantilever systems. Unit to have deep drawn well. Oil drains through a tap on the front. Exterior panels of unit in Stainless steel with Scotch Brite finish. One piece pressed work top in 1.5 mm thick Stainless steel. Unit has right-angled side edges to allow flush-fitting junction between units.

Main Features

- Unit to be mounted on open base cupboards, bridging supports or cantilever systems.
- Thermostatic regulation of oil temperature up to a maximum of 185 °C.
- Overheat protection thermostat as standard on all units.
- Oil drains through a tap positioned on the front the well.
- All major compartments located in front of unit for ease of maintenance.
- IPx4 water protection.
- Incoloy armoured heating elements located inside the well can be lifted up for easier cleaning.
- Optional portable oil quality monitoring tool (code 9B8081) for efficient oil management.
- Suitable for countertop installation.

Construction

- All exterior panels in Stainless Steel with Scotch Brite finishing.
- One piece pressed 1.5 mm work top in Stainless steel.
- Model has right-angled side edges to allow flush fitting joints between units, eliminating gaps and possible dirt traps.
- Interior of well with rounded corners for ease of cleaning.

APPROVAL: _____



Experience the Excellence
www.electroluxprofessional.com

Included Accessories

- 1 of Basket for 12lt electric fryer tops PNC 921629

Optional Accessories

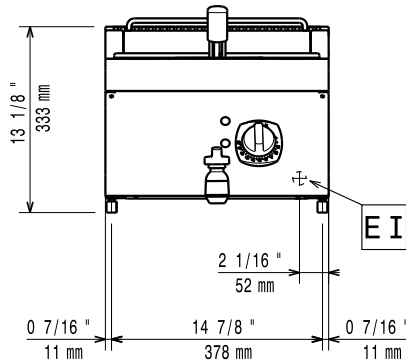
- Junction sealing kit PNC 206086 ☐
- Support for bridge type installation, 800mm PNC 206137 ☐
- Support for bridge type installation, 1000mm PNC 206138 ☐
- Support for bridge type installation, 1200mm PNC 206139 ☐
- Support for bridge type installation, 1400mm PNC 206140 ☐
- Support for bridge type installation, 1600mm PNC 206141 ☐
- Support for bridge type installation, 400mm PNC 206154 ☐
- Chimney upstand, 400mm PNC 206303 ☐
- Right and left side handrails PNC 206307 ☐
- Back handrail 800 mm PNC 206308 ☐
- 2 drawers for refrigerated base (only for 371142) PNC 206351 ☐
- Chimney grid net, 400mm (700XP/900) PNC 206400 ☐
- 2 side covering panels for top appliances PNC 216277 ☐
- Basket for 12lt electric fryer tops PNC 921629 ☐
- Water additive against corrosion for indirect boiling pans (only for 371079) PNC 927222 ☐
- 2 baskets for 2x5lt and 12lt electric fryers PNC 960638 ☐



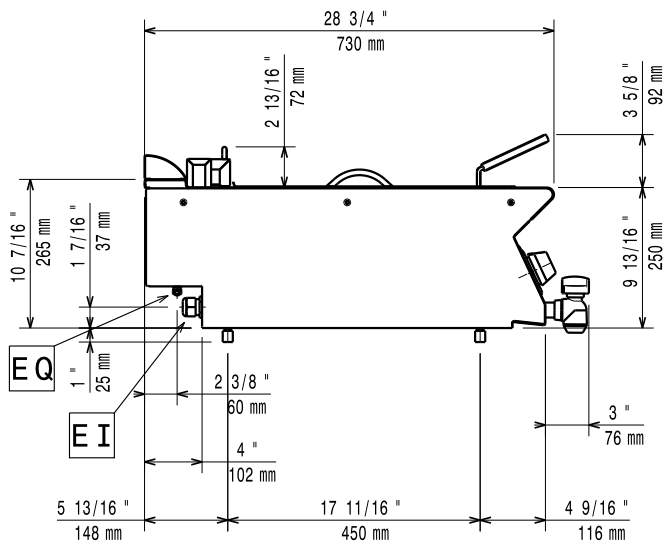
Electrolux
PROFESSIONAL

Modular Cooking Range Line 700XP One Well Electric Fryer Top 12 liter

Front

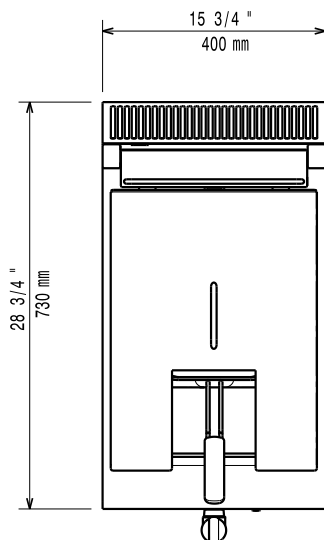


Side



EI = Electrical inlet (power)
EQ = Equipotential screw

Top



Electric

Supply voltage:

371079 (E7FRED1E00)

380-400 V/3N ph/50/60 Hz

371142 (E7FRED1E0N)

230 V/3 ph/50/60 Hz

Predisposed for:

371079 (E7FRED1E00)

380-400V 3N~ 50/60Hz
7,9-8,7kW

Total Watts:

8.7 kW

Key Information:

If appliance is set up or next to or against temperature sensitive furniture or similar, a safety gap of approximately 150 mm should be maintained or some form of heat insulation fitted.

Usable well dimensions

(width): 240 mm

Usable well dimensions

(height): 235 mm

Usable well dimensions

(depth): 420 mm

Well capacity:

10 lt MIN; 12 lt MAX

Thermostat Range:

105 °C MIN; 185 °C MAX

Net weight:

25 kg

Shipping weight:

371079 (E7FRED1E00)

30 kg

371142 (E7FRED1E0N)

ISO 9001 kg

Shipping height:

371079 (E7FRED1E00)

530 mm

371142 (E7FRED1E0N)

540 mm

Shipping width:

460 mm

Shipping depth:

820 mm

Shipping volume:

0.2 m³

Certification group:

371079 (E7FRED1E00)

EF17112

371142 (E7FRED1E0N)

N7FE2



Modular Cooking Range Line
700XP One Well Electric Fryer Top 12 liter

The company reserves the right to make modifications to the products without prior notice. All information correct at time of printing.

2026.02.03